



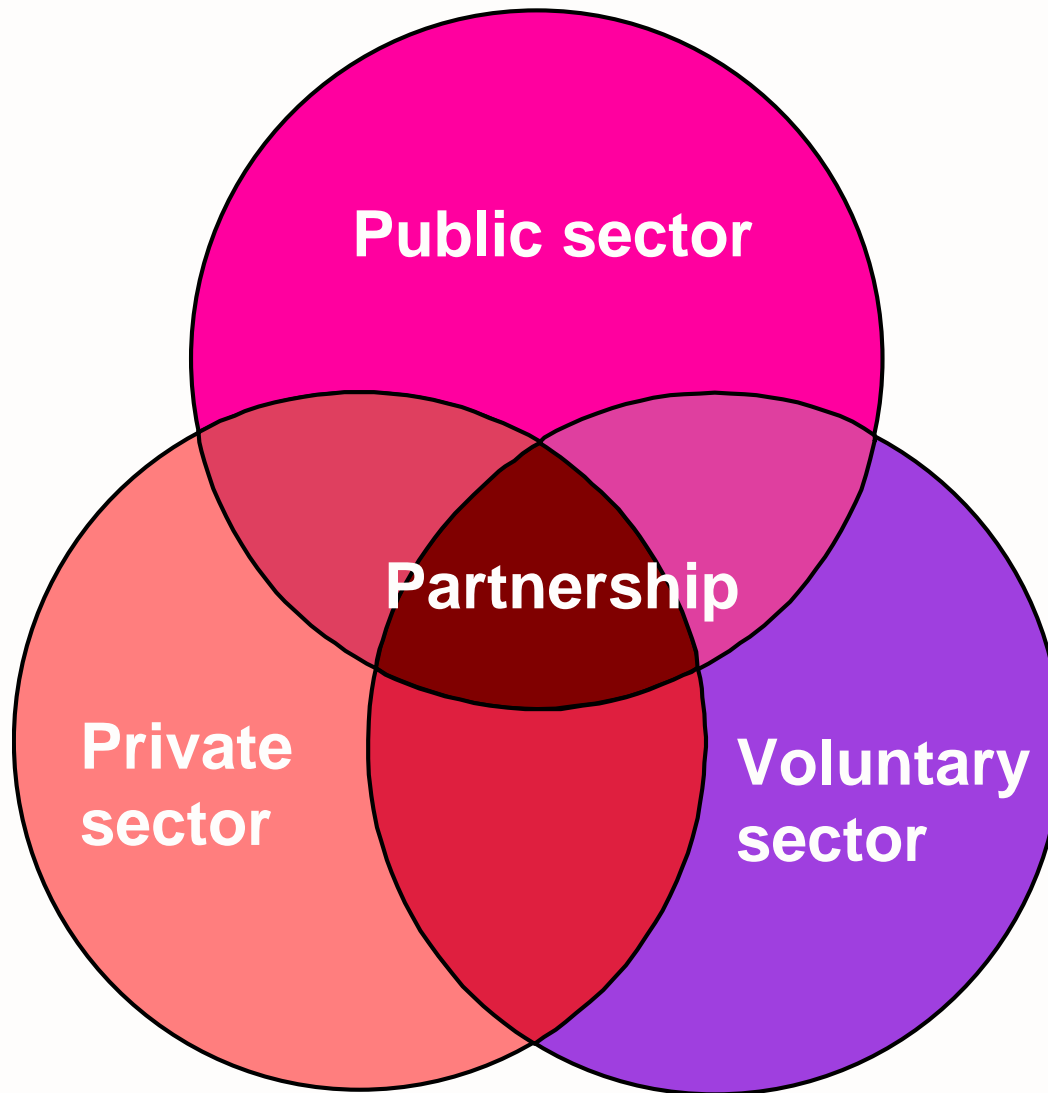
CHANGING PLACES

CHANGING LIVES

What is Groundwork?



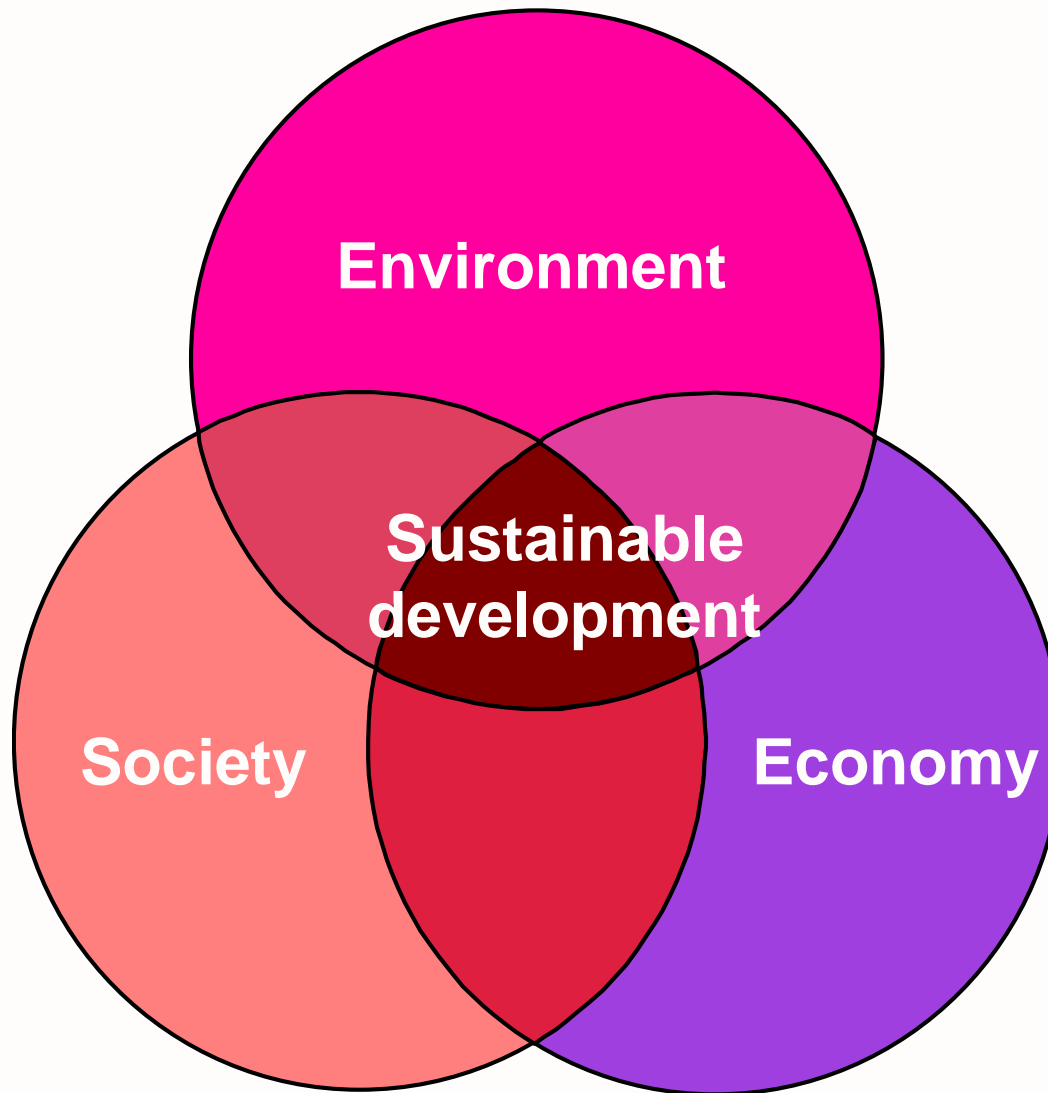
- A leading environmental regeneration organisation
- A federation of 50 local Trusts in England, Wales and Northern Ireland
- A partnership between the public, private and voluntary sectors – A Non-Governmental Organisation (NGO)



What do we do?



- Work through partnership to bring about social, economic and environmental regeneration
- Use local environmental action to engage and motivate people to improve their quality of life
- Deliver sustainable development in deprived and disadvantaged neighbourhoods



Some examples



- Small scale community environmental projects
- Major regional and national programmes
- Transforming derelict land into new community assets
- Working with young people to give them new skills and develop their potential

Some examples



- Helping businesses reduce waste and improve their environmental performance
- Providing training for long-term unemployed people and setting up 'green enterprises'
- Working with schoolchildren on projects in the classroom and in the community

Legal Structure



- A commonplace NGO mechanism in UK
- Registered Charities
- Companies 'Limited by Guarantee'
- Local Authority a part owner through Company ownership, but independence of a Board of Trustees



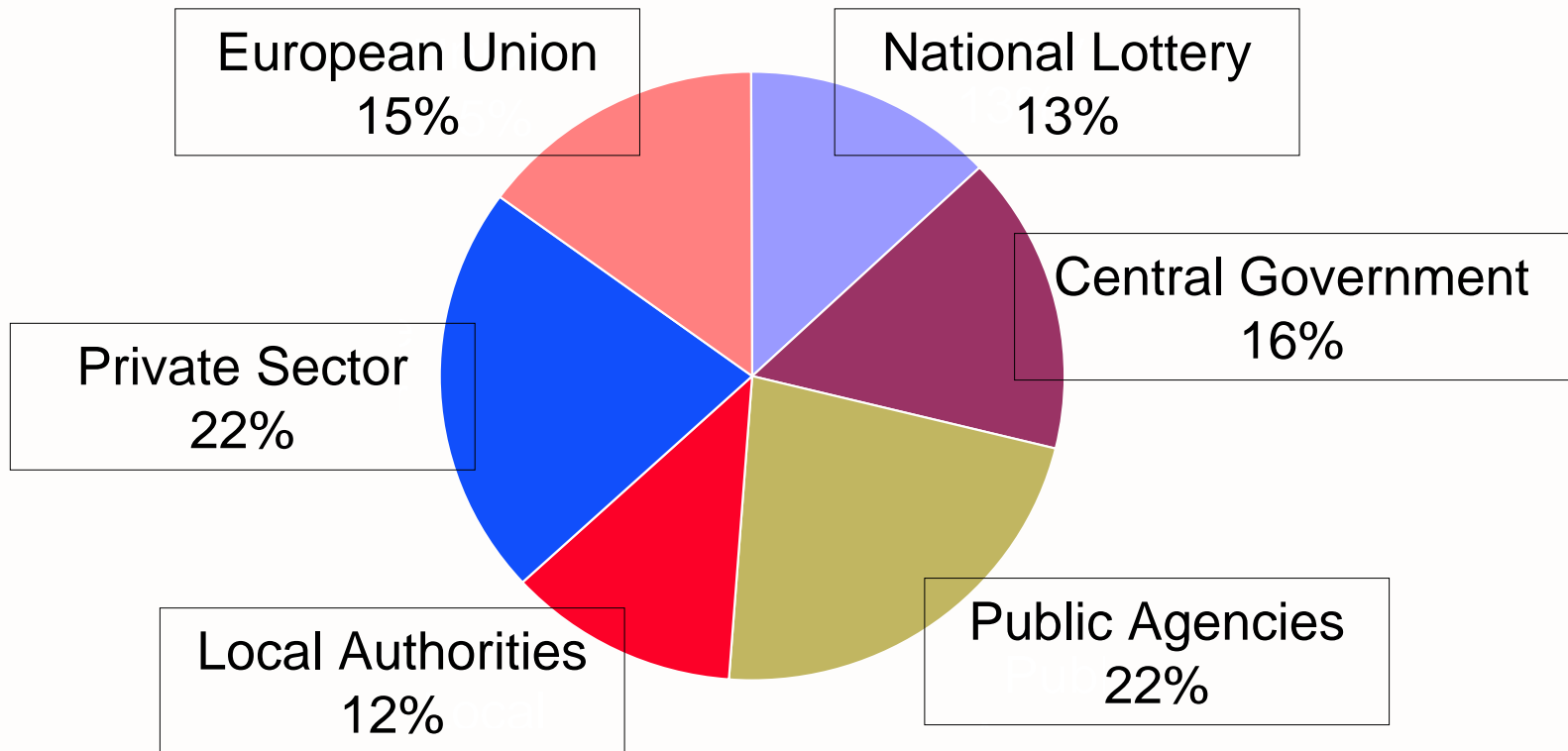
Governmental Support

- Groundwork is supported by ODPM and other departments, Welsh Assembly, Northern Ireland Executive, RDAs, EU, lottery, and more than 100 local authorities
- Why?
- Groundwork can **DELIVER** and has a track record
- ‘Best Value’

Private sector support

- National private sector supporters include Barclays, The Royal Bank of Scotland, HBOS and Marks & Spencer
- Why?
- Corporate Social Responsibility
- Marketing
- ‘Donations’ versus ‘Sponsorship’

Funding Sources





The strategy

Our purpose:

To build sustainable communities through
joint environmental action

PEOPLE

PLACES

PROSPERITY

Brownfield Regeneration



The Barriers:

- “Economics” and money
- Ownership
- Perceptions of “value”
- Too narrow a focus on issues of housing and contamination
- Slow cascade of effective practice
- Lack of a comprehensive and coherent UK brownfields strategy

Brownfield Regeneration



The Solutions?

- Turning off the 'tap' - regulation
- Mainstream economic activity
- Government programmes (e.g. DLG, Partnership Investment Programme, SRB)
- Activity of Government Agencies? (RDAs and English Partnerships)
- Spatial planning
- AND...

Brownfield Regeneration



The Groundwork Solutions

- Engaging with local people
- Accepting the validity and logic of GREEN AMENITY solutions
- Understanding and working with the grain of nature
- Embracing the broadest principles of sustainable development (addressing impacts and durability)
- Creating real and lasting value

Brownfield Regeneration



The Brownfield Problem...

Brownfield Regeneration



The Groundwork Solution

Groundwork in Action: 1

Colliers Moss Common

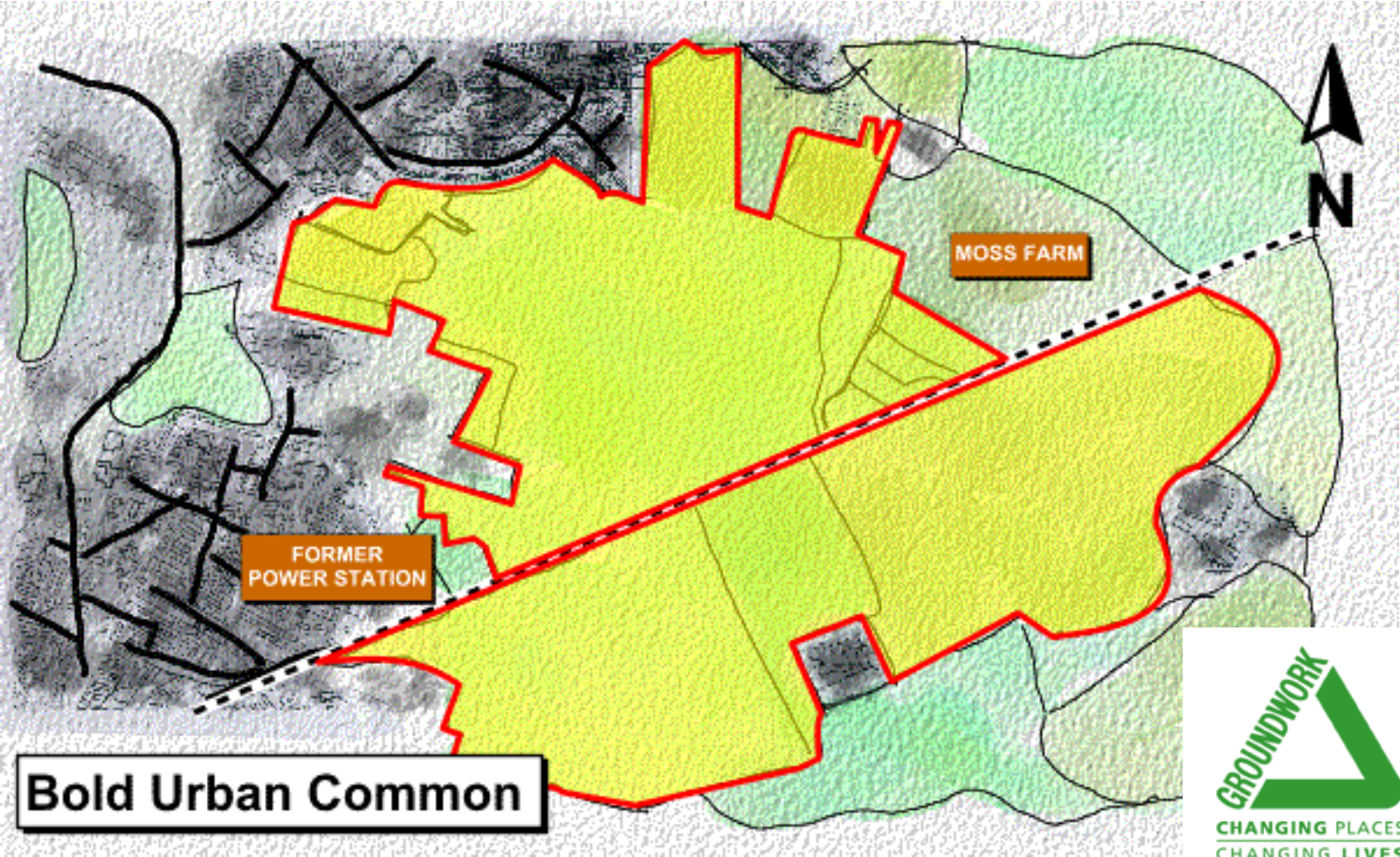
Colliers Moss Common – Groundwork St Helens

- 130 hectares of post industrial land straddling the main Manchester to Liverpool railway line near St Helens, Merseyside.
- To the south - the remains of Bold Colliery and Bold Power Station. To the north - fragments of a once extensive wetland at the fringes of a coal spoil heap.
- In 1990 Groundwork St Helens accepted the challenge from British Coal to restore the site. Reclamation work would accelerate and enhance natural re-colonisation to create a nature-rich urban common for local people.



Groundwork in Action: 1

Colliers Moss Common



Groundwork in Action: 1

Colliers Moss Common



Aerial photograph c. 1955

Groundwork in Action: 1

Colliers Moss Common



Groundwork in Action: 1

Colliers Moss Common



1955

1997

2000

Groundwork in Action: 1

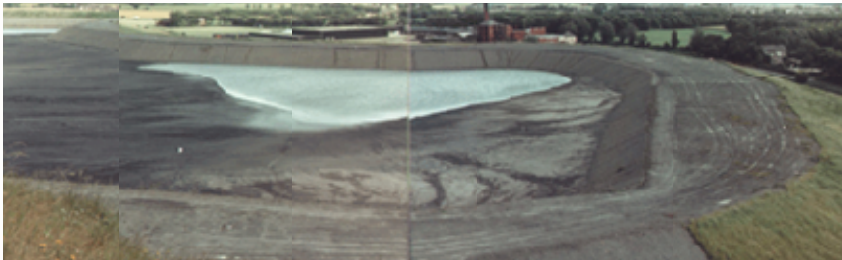
Colliers Moss Common



People & Nature

Groundwork in Action: 1

Colliers Moss Common



People & Nature



Groundwork in Action: 1

Colliers Moss Common



A Place for **People** : A Place for **Nature**



Groundwork in Action: 2

Land Restoration Trust

WHAT IS IT?

A new organisation with a remit ..

“.. TO ACT FOR THE NATION IN THE ACQUISITION OF LAND AT THE END OF ITS ECONOMIC LIFE AND TO HOLD SUCH LAND AS TRUSTEE, WORKING WITH THE COMMUNITY TO RESTORE IT TO HEALTH AND MANAGE IT FOR PUBLIC BENEFIT.”

Professor John Handley – The Post Industrial Landscape

.. to address the challenges of a post-industrial landscape



Groundwork in Action: 2

Land Restoration Trust

WHAT WILL THE LRT DO?

“THE LRT WILL IMPROVE THE **QUALITY OF LIFE** OF THE **COMMUNITIES** IN WHICH IT INVESTS, BY PROVIDING FOR THE LONG-TERM **SUSTAINABLE MANAGEMENT** OF CLEANER, SAFER, GREENER PUBLIC SPACES ACROSS ENGLAND ENCOMPASSING A RANGE OF LAND TYPES AND USES. TO THIS END IT WILL **ACQUIRE, OWN AND MANAGE** AT LEAST **10,000 HECTARES** OF PREVIOUSLY DERELICT AND UNDER-USED LAND WITHIN A **TEN YEAR** TIME-SCALE WITH A CONTINUAL GROWTH OF ITS PORTFOLIO THEREAFTER.”



Groundwork in Action: 2

Land Restoration Trust

1. WHERE IT CAN ADD VALUE

- Resolving **ownership** blockages
- Achieving benefits of **scale** while enabling **local** delivery
- Addressing issues of long term **risk** management
- Creating new approaches to **maintenance**
- Realising the **asset value** of abandoned land



Groundwork in Action: 2

Land Restoration Trust

2. CORE PRINCIPLES: **Sustainability** will be at the core of design, implementation and long-term maintenance.



Groundwork in Action: 2

Land Restoration Trust

2. CORE PRINCIPLES: The work will follow an **ecologically-informed** approach to reclamation



PLANNING AND DESIGN:

Understanding and working with the grain of nature



Groundwork in Action: 2

Land Restoration Trust

2. CORE PRINCIPLES: Projects delivered will engage and involve all sections of the **community**



PHYSICAL IMPLEMENTATION

“Ownership comes with involvement”



Groundwork in Action: 2

Land Restoration Trust

2. CORE PRINCIPLES: Projects delivered will engage and involve all sections of the **community**



MANAGEMENT AND MAINTENANCE:
“Community stewardship”



Groundwork in Action: 2

Land Restoration Trust

SOURCES OF FUNDING

- Endowments from landowners (+ investment income).
- Public funds (central and local government + agencies)
- ILM & Community enterprises
- Revenue streams from site activity (e.g. sports, car parking, biomass production)
- National Lotteries/Landfill /Aggregates Tax



Groundwork in Action: 2

Land Restoration Trust

WHAT'S THE PLAN?

- A **permanent** solution for large proportion of England's brownfield legacy.
- Independent charitable company
- An 'enabling land owner' - project delivery through local bodies
- Two staged development:
 - By year 3:**
 - responsible for 1,800 ha
 - By year 10:**
 - responsible for 10,000 ha
 - permanent endowment of £397 million
 - moving from deficit to break even





*“Groundwork is extraordinary ...
undertaking a huge amount of work.
For too long we simply said that is great
work, well done, get on with it. It is time
now to integrate this into the very core
script of how we regenerate local
communities.”*

Rt Hon Tony Blair MP

The facts



- Groundwork has a turnover of £90 million and employs more than 2,000 staff
- Groundwork projects exist in Europe, USA and Japan

Last year Groundwork:

- Encouraged volunteers to give more than 340,000 days of their time to support 4,800 projects
- Worked with 1,000 schools and 7,000 businesses
- Provided 50,000 weeks of training and created 2,500 jobs
- Improved 730 hectares of land



CHANGING PLACES

CHANGING LIVES